

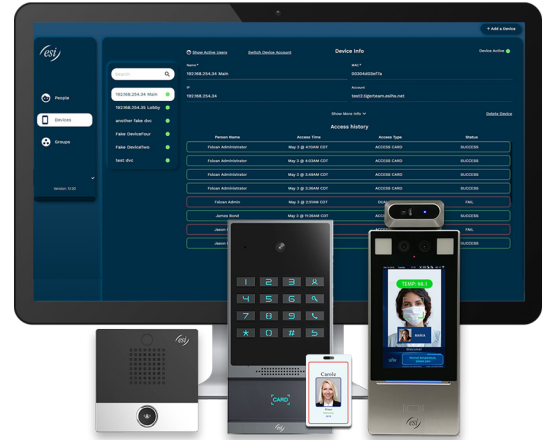


ESI Access™

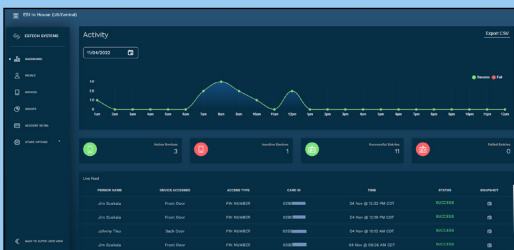
Facility Access Control

Entry control for your office, secure locations, warehouses, and remote facilities!

ESI Access™ is a powerful access control solution that helps keep your facilities more secure. A variety of door devices can control entry via programmed RFID cards, built-in dial pads, or a combination of both. Administrators can easily manage all connected devices and view detailed information, such as employee access history logs and usage events at the various entry points.



- **Scheduled door access with *Time Plan***
Allow select access devices (AC64v) to be programmed to lock/unlock doors automatically based on a predefined schedule.
- **Secure your facilities/sensitive information with permissions-based scheduling**
Allow or deny areas based on employee, department, time of day, or other criteria. This is critical where sensitive information is stored.
- **Remotely unlock doors and facilities**
Remotely unlock doors from a smartphone or ESI desktop phone. This is great for remote warehouses that receive off-hour deliveries.
- **Video integration with select ePhones**
See who is requesting entry from compatible desktop phones (supported models: *ePhone 8™*, *ePhone 4x™* and *ePhone X/X-1™ with video*).
- **Single and dual-factor authentication options for added security**
Select devices can allow access based on RFID badges, PINs, or a combination of both for enhanced security with dual authentication.
- **Create Groups for bulk scheduling**
Conveniently create group access for users with similar permissions, allowing for easy scheduling and management.



The **Access Dashboard** website provides a centralized location where you can manage select entry devices. Once logged in you can view a device's status and access history logs, while also managing users and group schedules. While devices may still be managed at an individual level, the dashboard allows for group device management and provisioning.

- Login from anywhere
- Centralized management
- View logs by device or personnel details
- View who gained access with Snapshots
- Easily manage users, devices, and group schedules

Access Device Matrix



	AC10v*	AC64v
ESI Platform	eSIP Evolution Series; eCloud PBX	eSIP Evolution Series; eCloud PBX
Web Management via <i>Access Dashboard</i>	NO	YES
Environment	Indoor Only	Indoor / Outdoor
Outdoor Enclosure Required	N/A	YES
Elements	Water Resistant (IP54 rating)	Water Resistant (IP66 rating)
Tamper Detection	-----	YES
Hardened (Case Strength)	-----	YES (IK07 rating)
2-way Audio	YES	YES
Video	1 MegaPixel 720p HD	2 MegaPixel 1080p HD @ 30 fps
Call Button	YES	YES
Keypad/Door Phone	-----	YES
RFID Card Scan	-----	YES
Door Scheduling with <i>Time Plan</i>™	NO	YES
Ethernet Speed	10/100 Mbps	10/100 Mbps
Min. Cable Rating	CAT5	CAT5
Size (LxWxH)	3.46" x 3.46" x 1.22"	7.3" x 3.46" x 1.42"
Operating Temperature	-4° to 122° F	-4° to 122° F
Weight	4.76 oz	~24.0 oz

* The AC10v is intercom only, and does not support key fobs, badges, or codes.

